

- SC25EUM-5
- SC25EUM-6
- SC25EUM-7

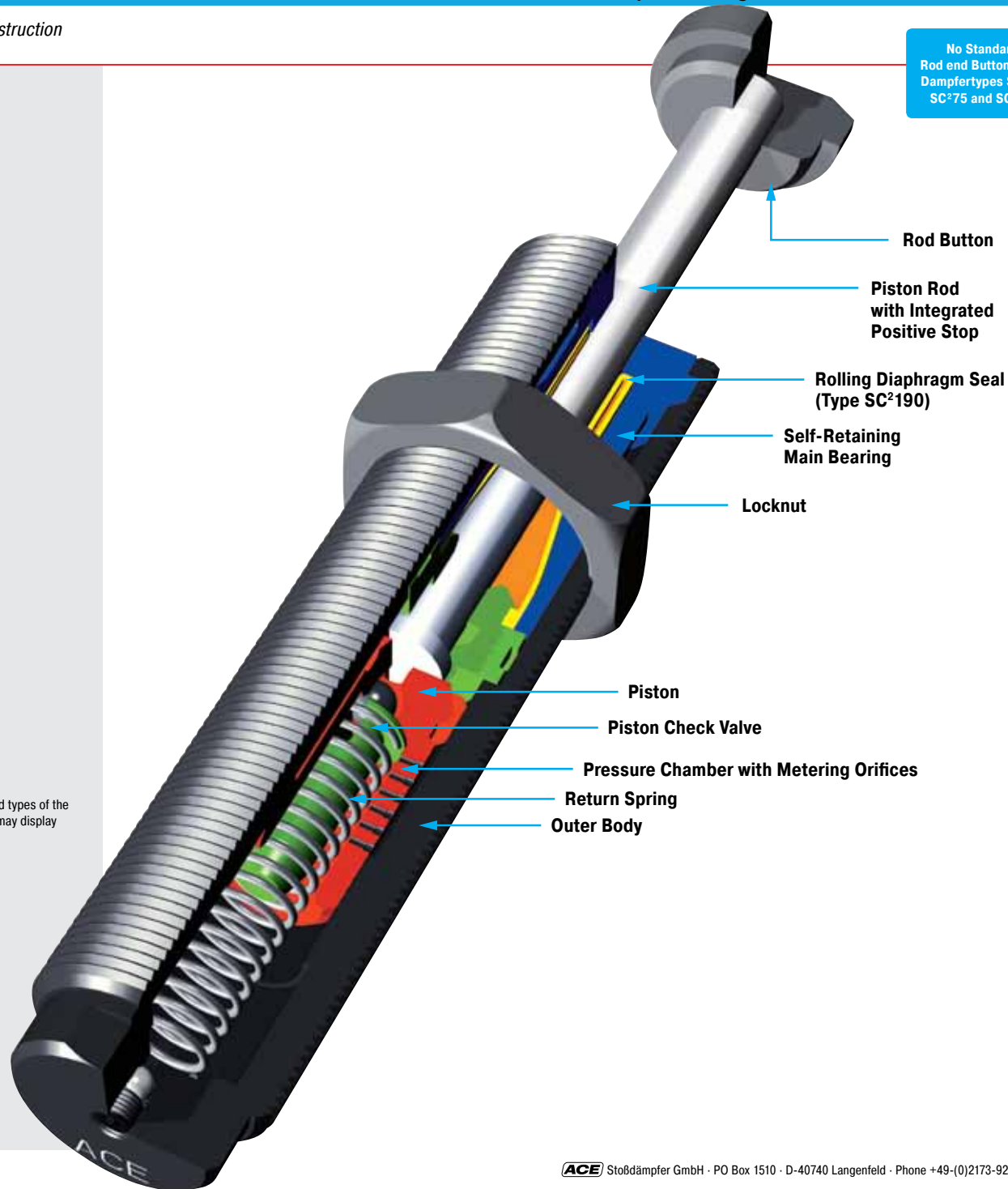
- SC75EUM-5
- SC75EUM-6
- SC75EUM-7

- SC190EUM-5
- SC190EUM-6
- SC190EUM-7

- SC300EUM-5
- SC300EUM-6
- SC300EUM-7
- SC300EUM-8
- SC300EUM-9

- SC650EUM-5
- SC650EUM-6
- SC650EUM-7
- SC650EUM-8
- SC650EUM-9

The listed type names are the corresponding standard types of the respective series of shock absorbers. Special types may display different type names.



No Standard-Rod end Button on the Dampfertypes SC²25, SC²75 and SC²190

Content	Page
General information	2
Safety information	2
Purpose	2
Description and function	2
Calculation and dimensioning	2
Delivery and storage	2
Maintenance and care	2
Dismantling and disposal	2
Mounting Instructions	3 – 7
Warranty	8
Technical Data	8
Mounting Instructions for accessories	A – B

General information

This operating manual serves the purpose of fault-free use of the miniature shock absorber types listed on page 1, compliance is a prerequisite for fulfilment of any warranty claims.

Please read the operating manual before use.

Always comply with the limit values provided in the performance table (technical data).

Please consider the prevailing environmental conditions and stipulations.

Please pay attention to the regulations from the trade association, technical inspection association or the corresponding national, international and European regulations.

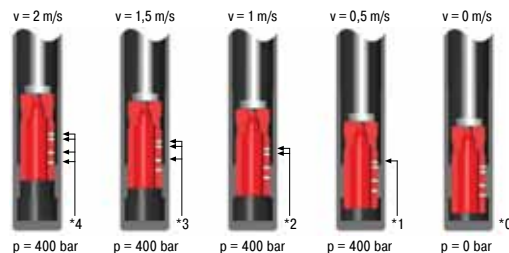
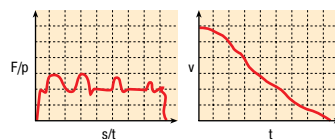
Only install and commission in accordance with the assembly instructions.

A prerequisite for a constant delay is the correct calculation of the industrial shock absorber and therefore the correct selection of the right throttle bore pattern or the correct hardness level of the shock absorber.

The hardnesses for the types SC²25, SC²75 and SC²190 of 5 (soft) to 7 (hard) graduated. For the types SC²300 and SC²650 are the hardnesses 5 (soft) up to 9 (hard) graduated.

General Function

F = Force (N)
 p = Internal pressure (bar)
 s = Stroke (m)
 t = Deceleration time (s)
 v = Velocity (m/s)



* The load velocity reduces continuously as you travel through the stroke due to the reduction in the number of metering orifices (*) in action. The internal pressure remains essentially constant and thus the force vs. stroke curve remains linear.

Safety information

WARNING

- Additional security elements must be used if ACE miniature shock absorbers are to be used where failure of the product could lead to personal damage and/or damage to property.
- Free moving masses can lead to injuries due to crushing when installing the shock absorber. Protect moving masses against unintentional start-up with suitable safety precautions before installing the shock absorbers.

Purpose

ACE miniature shock absorbers are used anywhere where moving masses have to be stopped at a defined end position. The industrial shock absorbers are designed to take the force in an axial direction. Within the authorised load limits, the industrial shock absorbers also works as a mechanical stop.

Description and function

The ACE miniature shock absorbers SC²25 to SC²650 are maintenance-free, ready-to-install, hydraulic elements with a number of throttle openings.

In the braking process, the moving mass drives the piston rod with kinetic energy, and possibly with additional drive energy, in an axial direction with the defined impact speed against the impact head or the front face of the piston rod (SC²25, SC²75 and SC²190 Type) of the shock absorber. As an alternative, several shock absorbers can be used parallel. In the braking procedure used, the piston rod is pushed into the shock absorber. The hydraulic oil found in front of the piston is forced through all throttle bores at the same time. The number of effective throttle openings reduces proportional to the driven stroke. The run-in speed reduces. The dynamic pressure in front of the piston corresponds with the counterforce applied by the shock absorber and remains almost constant throughout the whole stroke.

Calculation and dimensioning

In order to guarantee the long life time of the shock absorber it must be correctly calculated and dimensioned. To do this the following parameters must be considered:

- > moving mass [kg]
- > impact velocity of moving mass onto the shock absorber [m/s]
- > additional acting propelling force, motor power or propelling torque [N, kW, Nm]
- > number of parallel acting shock absorbers [n]
- > number of strokes or cycles per hour [1/h]

The correct dimensioning of shock absorbers can be made with the ACE online calculation program at www.ace-ace.com. Alternatively the filled out online form may be sent to us via E-Mail. Or call our free of charge calculation service: +49-(0)2173-9226-20.

WARNING

- The shock absorbers have to be dimensioned in such a way that the calculated values do not exceed the maximum values of the individual capacity chart (technical data):
 W_3 [Nm/stroke]
 W_4 [Nm/h]
 effective weight me
 max. side load angle [°]
- To correctly calculate the shock absorber it must be the only active brake system in place. Additional deceleration systems, such as pneumatic cushioning, must be rendered ineffective and not allowed to interfere with the shock absorber deceleration.

Delivery and storage

- > Please check the shock absorber for any damage upon delivery.
- > The shock absorbers can suffer damage if allowed to fall. Please remove the shock absorbers carefully from the packaging.
- > Shock absorbers can generally be stored in any position.
- > Storage in the original packaging is recommended.
- > Always store shock absorbers in a dry place to avoid oxidation.
- > The maximum recommended storage time is three years.

Maintenance and care

Check the shock absorbers regularly for oil loss, piston rod return and external damages.

Shock absorbers are machine elements that are subjected to constant wear and tear. The absorbing effect reduces during the service life. When this is no longer sufficient, the shock absorbers must be replaced or exchanged.

Dismantling and disposal

Ensure that the shock absorbers are dealt with under consideration of environmental protection (problematic substance utilisation).

The SC² miniature shock absorbers are filled with oil. You can request the corresponding data sheets for the respective type. Defective absorbers can be sent to our services department to establish the cause of failure.

Mounting instructions

Prior to installation and use, check if the identification number on the shock absorber or on the package corresponds to the number on the delivery sheet. Industrial shock absorbers are maintenance-free and ready-to-fit.

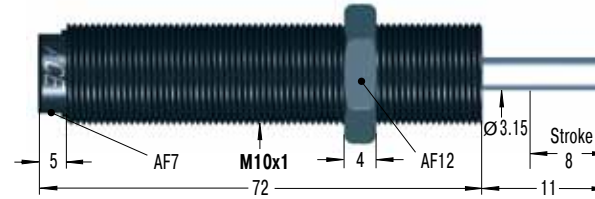
Operating temperature range: 0 °C to 66 °C

Mounting: In any position, but always so that the complete stroke can be used. The shock absorber is to be mounted so that the forces can be guided centrally via the piston rod.

The maximum permissible side load of 2° should not be exceeded. An existing side load leads generally to a reduced lifetime. When exceeding the maximum permissible side load, a side load adaptor should be used.

Disposal of packaging

Dispose of packaging in an environmentally safe manner. The recycling of packaging saves raw materials and lowers the amount of waste. The used packaging materials do not contain illegal substances.



WARNING

- Thermal effect:** The values given in the capacity chart W₁ and m_e (see operating and installation instructions or main catalogue) are valid for room temperature. Different values apply for higher temperatures.
- Moving masses** can lead to injuries or bodily harm when installing the shock absorber. Secure moving masses against accidental movement.
- The shock absorbers may be unsuitable for the application and show insufficient damping performance. Check for proper suitability of shock absorber.
- When operating outside the allowed temperature range, the shock absorber may lose its functionality. Permissible temperature range must be adhered to. Do not paint the shock absorber due to heat radiation.
- Ambient fluids, gases and dirt particles may affect or damage the sealing system and lead to failure of the shock absorber. Piston rods and sealing systems must be protected against foreign substances.
- Damage to the piston rod surface may destroy the sealing system. Do not grease, oil, etc. the piston rod and protect it from dirt particles.
- The piston rod can be torn out of the shock absorber. Do not put tensile stress on the piston rod.
- The shock absorber can tear off upon impact. The mount must be calculated so that the maximum operating reaction forces can be accepted with sufficient safety. The maximum reaction forces given in the calculation report may deviate from the actual reaction forces since these are based on theoretical values.

Initial Start-Up Checks

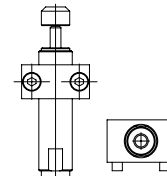
> After installation, start a test run on the moving mass initially with a reduced operating speed.

During the test run:

> Accelerate the load capacity step-by-step up to the subsequent operating speed. This can be taken from the calculation of your application. In the correct end position, the piston rod on the shock absorber reaches the end piece (fixed impact) without a hard impact.

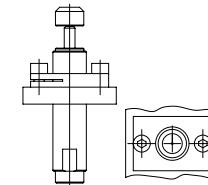
Mounting Options

Usage of the mounting blocks MBSC2

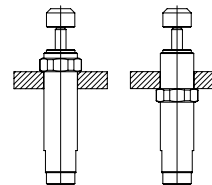


Tightening torque:
KM10 = 4-4.3 Nm

Usage of the rectangular flange RF



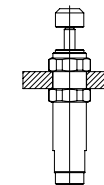
Screwing in the shock absorbers into a tapped hole with an additional locknut



Tightening torque:
KM10 = 4-4.3 Nm

Minimum thread depth:
1.5 x thread diameter

Mounting the shock absorbers in the tapped hole with two locknuts



Tightening torque:
KM10 = 4-4.3 Nm

Accessories

When using accessories and mounting elements, please consider the separate mounting instructions for accessories.

EU Marking

Starting with the production date September 2010 (Code IB or 10244) all shock absorbers are to be marked with an additional EU letter code in the identification number. The EU marking refers to the adherence to the required norms, laws, and guidelines of the EU. Only products marked with EU ensure the worldwide standard and the guarantee for liability.

Mounting instructions

Prior to installation and use, check if the identification number on the shock absorber or on the package corresponds to the number on the delivery sheet. Industrial shock absorbers are maintenance-free and ready-to-fit.

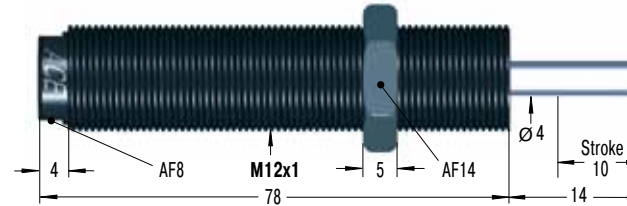
Operating temperature range: 0 °C to 66 °C

Mounting: In any position, but always so that the complete stroke can be used. The shock absorber is to be mounted so that the forces can be guided centrally via the piston rod.

The maximum permissible side load of 2° should not be exceeded. An existing side load leads generally to a reduced lifetime. When exceeding the maximum permissible side load, a side load adaptor should be used.

Disposal of packaging

Dispose of packaging in an environmentally safe manner. The recycling of packaging saves raw materials and lowers the amount of waste. The used packaging materials do not contain illegal substances.



WARNING

- Thermal effect:** The values given in the capacity chart W₁ and m_e (see operating and installation instructions or main catalogue) are valid for room temperature. Different values apply for higher temperatures.
- Moving masses** can lead to injuries or bodily harm when installing the shock absorber. Secure moving masses against accidental movement.
- The shock absorbers may be unsuitable for the application and show insufficient damping performance. Check for proper suitability of shock absorber.
- When operating outside the allowed temperature range, the shock absorber may lose its functionality. Permissible temperature range must be adhered to. Do not paint the shock absorber due to heat radiation.
- Ambient fluids, gases and dirt particles may affect or damage the sealing system and lead to failure of the shock absorber. Piston rods and sealing systems must be protected against foreign substances.
- Damage to the piston rod surface may destroy the sealing system. Do not grease, oil, etc. the piston rod and protect it from dirt particles.
- The piston rod can be torn out of the shock absorber. Do not put tensile stress on the piston rod.
- The shock absorber can tear off upon impact. The mount must be calculated so that the maximum operating reaction forces can be accepted with sufficient safety. The maximum reaction forces given in the calculation report may deviate from the actual reaction forces since these are based on theoretical values.

Initial Start-Up Checks

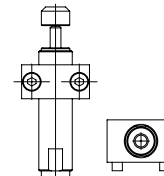
> After installation, start a test run on the moving mass initially with a reduced operating speed.

During the test run:

> Accelerate the load capacity step-by-step up to the subsequent operating speed. This can be taken from the calculation of your application. In the correct end position, the piston rod on the shock absorber reaches the end piece (fixed impact) without a hard impact.

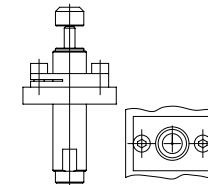
Mounting Options

Usage of the mounting blocks MBSC2

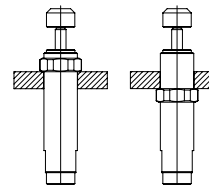


Tightening torque:
KM12 = 5.0-5.4 Nm

Usage of the rectangular flange RF



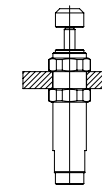
Screwing in the shock absorbers into a tapped hole with an additional locknut



Tightening torque:
KM12 = 5.0-5.4 Nm

Minimum thread depth:
1.5 x thread diameter

Mounting the shock absorbers in the tapped hole with two locknuts



Tightening torque:
KM12 = 5.0-5.4 Nm

Accessories

When using accessories and mounting elements, please consider the separate mounting instructions for accessories.

EU Marking

Starting with the production date September 2010 (Code IB or 10244) all shock absorbers are to be marked with an additional EU letter code in the identification number. The EU marking refers to the adherence to the required norms, laws, and guidelines of the EU. Only products marked with EU ensure the worldwide standard and the guarantee for liability.

Mounting instructions

Prior to installation and use, check if the identification number on the shock absorber or on the package corresponds to the number on the delivery sheet. Industrial shock absorbers are maintenance-free and ready-to-fit.

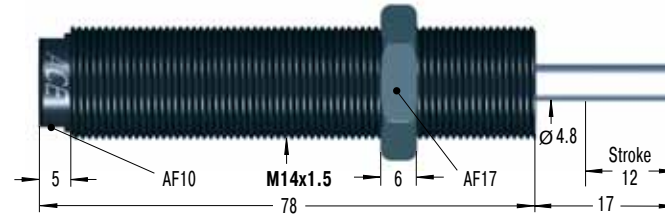
Operating temperature range: 0 °C to 66 °C

Mounting: In any position, but always so that the complete stroke can be used. The shock absorber is to be mounted so that the forces can be guided centrally via the piston rod.

The maximum permissible side load of 2° should not be exceeded. An existing side load leads generally to a reduced lifetime. When exceeding the maximum permissible side load, a side load adaptor should be used.

Disposal of packaging

Dispose of packaging in an environmentally safe manner. The recycling of packaging saves raw materials and lowers the amount of waste. The used packaging materials do not contain illegal substances.



WARNING

- Thermal effect:** The values given in the capacity chart W₁ and m_e (see operating and installation instructions or main catalogue) are valid for room temperature. Different values apply for higher temperatures.
- Moving masses** can lead to injuries or bodily harm when installing the shock absorber. Secure moving masses against accidental movement.
- The shock absorbers may be unsuitable for the application and show insufficient damping performance. Check for proper suitability of shock absorber.
- When operating outside the allowed temperature range, the shock absorber may lose its functionality. Permissible temperature range must be adhered to. Do not paint the shock absorber due to heat radiation.
- Ambient fluids, gases and dirt particles may affect or damage the sealing system and lead to failure of the shock absorber. Piston rods and sealing systems must be protected against foreign substances.
- Damage to the piston rod surface may destroy the sealing system. Do not grease, oil, etc. the piston rod and protect it from dirt particles.
- The piston rod can be torn out of the shock absorber. Do not put tensile stress on the piston rod.
- The shock absorber can tear off upon impact. The mount must be calculated so that the maximum operating reaction forces can be accepted with sufficient safety. The maximum reaction forces given in the calculation report may deviate from the actual reaction forces since these are based on theoretical values.

Initial Start-Up Checks

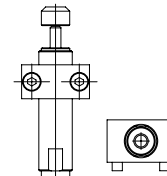
> After installation, start a test run on the moving mass initially with a reduced operating speed.

During the test run:

> Accelerate the load capacity step-by-step up to the subsequent operating speed. This can be taken from the calculation of your application. In the correct end position, the piston rod on the shock absorber reaches the end piece (fixed impact) without a hard impact.

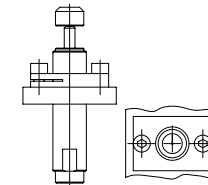
Mounting Options

Usage of the mounting blocks MBSC2

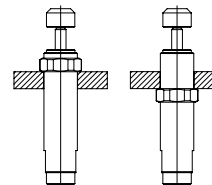


Tightening torque:
KM14 = 13-14 Nm

Usage of the rectangular flange RF



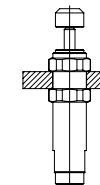
Screwing in the shock absorbers into a tapped hole with an additional locknut



Tightening torque:
KM14 = 13-14 Nm

Minimum thread depth:
1.5 x thread diameter

Mounting the shock absorbers in the tapped hole with two locknuts



Tightening torque:
KM14 = 13-14 Nm

Accessories

When using accessories and mounting elements, please consider the separate mounting instructions for accessories.

EU Marking

Starting with the production date September 2010 (Code IB or 10244) all shock absorbers are to be marked with an additional EU letter code in the identification number. The EU marking refers to the adherence to the required norms, laws, and guidelines of the EU. Only products marked with EU ensure the worldwide standard and the guarantee for liability.

Mounting instructions

Prior to installation and use, check if the identification number on the shock absorber or on the package corresponds to the number on the delivery sheet. Industrial shock absorbers are maintenance-free and ready-to-fit.

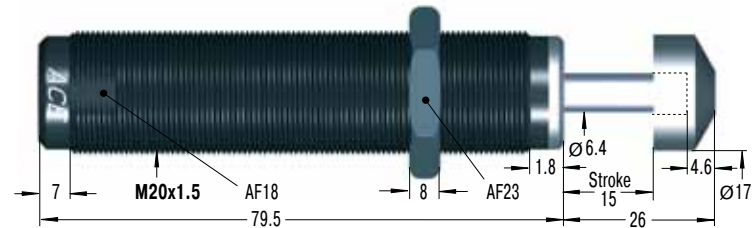
Operating temperature range: 0 °C to 66 °C

Mounting: In any position, but always so that the complete stroke can be used. The shock absorber is to be mounted so that the forces can be guided centrally via the piston rod.

The maximum permissible side load of 5° should not be exceeded. An existing side load leads generally to a reduced lifetime. When exceeding the maximum permissible side load, a side load adaptor should be used.

Disposal of packaging

Dispose of packaging in an environmentally safe manner. The recycling of packaging saves raw materials and lowers the amount of waste. The used packaging materials do not contain illegal substances.



WARNING

- Thermal effect:** The values given in the capacity chart W₁ and m_e (see operating and installation instructions or main catalogue) are valid for room temperature. Different values apply for higher temperatures.
- Moving masses** can lead to injuries or bodily harm when installing the shock absorber. Secure moving masses against accidental movement.
- The shock absorbers may be unsuitable for the application and show insufficient damping performance. Check for proper suitability of shock absorber.
- When operating outside the allowed temperature range, the shock absorber may lose its functionality. Permissible temperature range must be adhered to. Do not paint the shock absorber due to heat radiation.
- Ambient fluids, gases and dirt particles may affect or damage the sealing system and lead to failure of the shock absorber. Piston rods and sealing systems must be protected against foreign substances.
- Damage to the piston rod surface may destroy the sealing system. Do not grease, oil, etc. the piston rod and protect it from dirt particles.
- The piston rod can be torn out of the shock absorber. Do not put tensile stress on the piston rod.
- The shock absorber can tear off upon impact. The mount must be calculated so that the maximum operating reaction forces can be accepted with sufficient safety. The maximum reaction forces given in the calculation report may deviate from the actual reaction forces since these are based on theoretical values.

Initial Start-Up Checks

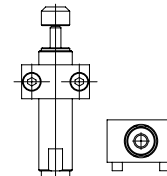
> After installation, start a test run on the moving mass initially with a reduced operating speed.

During the test run:

> Accelerate the load capacity step-by-step up to the subsequent operating speed. This can be taken from the calculation of your application. In the correct end position, the piston rod on the shock absorber reaches the end piece (fixed impact) without a hard impact.

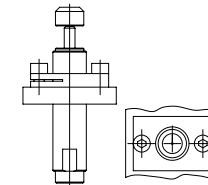
Mounting Options

Usage of the mounting blocks MBSC2

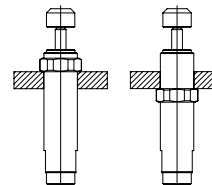


Tightening torque:
KM20 = 27-30 Nm

Usage of the rectangular flange RF



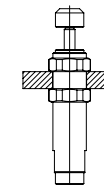
Screwing in the shock absorbers into a tapped hole with an additional locknut



Tightening torque:
KM20 = 27-30 Nm

Minimum thread depth:
1.5 x thread diameter

Mounting the shock absorbers in the tapped hole with two locknuts



Tightening torque:
KM20 = 27-30 Nm

Accessories

When using accessories and mounting elements, please consider the separate mounting instructions for accessories.

EU Marking

Starting with the production date September 2010 (Code IB or 10244) all shock absorbers are to be marked with an additional EU letter code in the identification number. The EU marking refers to the adherence to the required norms, laws, and guidelines of the EU. Only products marked with EU ensure the worldwide standard and the guarantee for liability.

Mounting instructions

Prior to installation and use, check if the identification number on the shock absorber or on the package corresponds to the number on the delivery sheet. Industrial shock absorbers are maintenance-free and ready-to-fit.

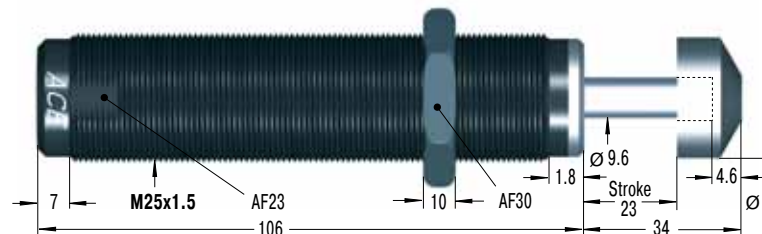
Operating temperature range: 0 °C to 66 °C

Mounting: In any position, but always so that the complete stroke can be used. The shock absorber is to be mounted so that the forces can be guided centrally via the piston rod.

The maximum permissible side load of 5° should not be exceeded. An existing side load leads generally to a reduced lifetime. When exceeding the maximum permissible side load, a side load adaptor should be used.

Disposal of packaging

Dispose of packaging in an environmentally safe manner. The recycling of packaging saves raw materials and lowers the amount of waste. The used packaging materials do not contain illegal substances.



WARNING

- Thermal effect:** The values given in the capacity chart W₁ and m_e (see operating and installation instructions or main catalogue) are valid for room temperature. Different values apply for higher temperatures.
- Moving masses** can lead to injuries or bodily harm when installing the shock absorber. Secure moving masses against accidental movement.
- The shock absorbers may be unsuitable for the application and show insufficient damping performance. Check for proper suitability of shock absorber.
- When operating outside the allowed temperature range, the shock absorber may lose its functionality. Permissible temperature range must be adhered to. Do not paint the shock absorber due to heat radiation.
- Ambient fluids, gases and dirt particles may affect or damage the sealing system and lead to failure of the shock absorber. Piston rods and sealing systems must be protected against foreign substances.
- Damage to the piston rod surface may destroy the sealing system. Do not grease, oil, etc. the piston rod and protect it from dirt particles.
- The piston rod can be torn out of the shock absorber. Do not put tensile stress on the piston rod.
- The shock absorber can tear off upon impact. The mount must be calculated so that the maximum operating reaction forces can be accepted with sufficient safety. The maximum reaction forces given in the calculation report may deviate from the actual reaction forces since these are based on theoretical values.

Initial Start-Up Checks

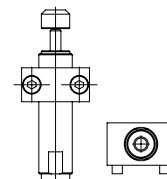
> After installation, start a test run on the moving mass initially with a reduced operating speed.

During the test run:

> Accelerate the load capacity step-by-step up to the subsequent operating speed. This can be taken from the calculation of your application. In the correct end position, the piston rod on the shock absorber reaches the end piece (fixed impact) without a hard impact.

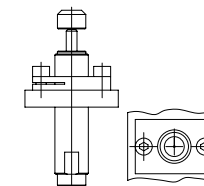
Mounting Options

Usage of the mounting blocks MBSC2

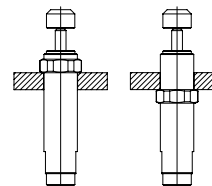


Tightening torque:
KM25 = 60-66 Nm

Usage of the rectangular flange RF



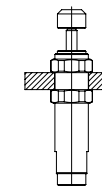
Screwing in the shock absorbers into a tapped hole with an additional locknut



Tightening torque:
KM25 = 60-66 Nm

Minimum thread depth:
1.5 x thread diameter

Mounting the shock absorbers in the tapped hole with two locknuts



Tightening torque:
KM25 = 60-66 Nm

Accessories

When using accessories and mounting elements, please consider the separate mounting instructions for accessories.

EU Marking

Starting with the production date September 2010 (Code IB or 10244) all shock absorbers are to be marked with an additional EU letter code in the identification number. The EU marking refers to the adherence to the required norms, laws, and guidelines of the EU. Only products marked with EU ensure the worldwide standard and the guarantee for liability.

Warranty

All changes to the product generally lead to exclusion of warranty.

Obvious defects must be immediately notified in writing to the seller upon delivery, within one week at the latest, but always before processing or installation, otherwise enforcement of a warranty claim is excluded. Punctual despatch is sufficient to comply with the deadline.

The seller must be given the opportunity to check on the premises. In the case of an authorised complaint, the seller can choose between an improvement and replacement delivery. If subsequent fulfilment is not successful, the buyer can choose between reducing the payment (reduction) and reversing the contract (withdrawal). The buyer is not entitled to withdraw from the contract in the case of a negligible contract breach; especially negligible defects.

If the buyer chooses to withdraw from the contract due to a legal or material defect after failed subsequent fulfilment, he is not entitled to additional claims to replacement of damages due to a defect.

If the buyer chooses replacement of damages after failed subsequent fulfilment, the goods remain with the buyer where feasible. Replacement of damages is restricted to the difference between the purchase price and the value of the defective item. This does not apply if the seller has caused a fraudulent breach of the contract.

Only the product description from the seller is generally agreed with respect to the properties of the goods. Public statements, promotions or advertising by the manufacturer do not represent contractual properties of the goods. If the buyer receives a faulty set of assembly instructions, the seller is only obliged to supply a correct set of instructions and only if the fault in the assembly instructions oppose correct assembly.

The warranty period is two years and begins upon delivery. The exchange and return of customised production items is generally excluded. The factory conditions in the manufacturing plant, which can be viewed by the ordering party on the seller's premises at any time, apply to parts not produced and processes by the seller. Construction and installation parts are supplied according to the most recent status.

Life expectancy

Industrial shock absorbers are machine elements that are generally subject to wear and tear. Expendable parts such as seals, pressure parts and pistons are excluded from the general warranty. The wear of the seals essentially depends on the environmental conditions, the respective application and the use parameters.

This type of industrial shock absorber with a lip seal sealing system can generally expect an average service life of three to five million load cycles. Unfavourable environmental and use conditions can considerably reduce the expected service life.

Capacity Chart

Type	Max. Energy Capacity		Effective Weight me					Min. Return Force N	Max. Return Force N	Rod Reset Time s	1Max. Side Load Angle °	Weight kg
	W ₃ Nm/Cycle	W _e Nm/h	Soft		Hard							
			me min. kg	me min. kg	me min. kg	me min. kg	me min. kg					
SC25EUM-5	10	16000	1 - 5	5	5	5	5	4.5	14	0.3	2	0.027
SC75EUM-5	16	30000	1 - 8	8	8	8	8	6	19	0.3	2	0.045
SC190EUM-5	31	50000	2 - 16	13 - 140	136 - 1550	—	—	6	19	0.4	2	0.060
SC300EUM-5	73	45000	11 - 45	34 - 136	91 - 181	135 - 680	320 - 1950	8	18	0.2	5	0.164
SC650EUM-5	210	68000	23 - 113	90 - 360	320 - 1090	770 - 2630	1800 - 6350	11	33	0.3	5	0.315

¹ For applications with higher side load angles please contact ACE.

Technical Data

Impact velocity range: **0,09 m/s to 5,6 m/s** (Depending on the type, or hardness range)

Rod end button: SC²300 and SC²650 **Steel hardened**; no Standard Rod end Button at the Dampfertypes SC²25, SC²75 and SC²190

Piston Rod Seal: SC²25 and SC²75 Type: **NBR Stretch Sealing System**
 SC²190 Type: **Rolling diaphragm seal EPDM ethylene-propylene**
 SC²300 and SC²650 Type: **NBR U-cup / wiper sealing package**

Operating fluid: SC²25 to SC²190: **Silicon oil** SC²300 and SC²650: **Synthetic oil**

Piston Rod: **Hardened, stainless steel**

Locknut: **Steel with black oxide finish**

Shock absorber body: **Nitride hardened steel**

Tightening torque Locknut: SC²25EUM-5 to SC25EUM-7: **4,3 Nm** SC²300EUM-5 to SC300EUM-9: **30 Nm**
 SC²75EUM-5 to SC75EUM-7: **5,4 Nm** SC²650EUM-5 to SC650EUM-9: **66 Nm**
 SC²190EUM-5 to SC190EUM-7: **14 Nm**

Operating temperature range: **0 °C to 66 °C**

Rectangular Flanges RF6 to RF25

Mounting instructions

Prior to mounting and application, check if the identification number on the rectangular flange or the packaging corresponds to the ID on the delivery note.

Mounting position: In any position, yet always so that the complete stroke can be used. Always mount the rectangular flange in order for the forces to be transferred centrally into the shock absorber or feed control via the piston rod. The maximum permissible side load angle of the individual types (see chart) may not be exceeded. To minimize the unsupported length, it is recommended to mount the rectangular flange in the first third of the outer body.

Mounting

Assemble the rectangular flange with the provided socket head bolt (DIN 912). The mounting surface must be level. The threads on the connection parts must be able to accept the maximum arising generated forces during continuous operation safely. Refer to technical support of ACE for generated forces. After aligning the rectangular flange and positioning the shock absorber or hydraulic feed control in the required position, tighten the screws with the torque stated in the chart. The shock absorber(s) or hydraulic feed control(s) need not be secured with an additional locknut. The listed product types are secured with the integrated clamp slot while adhering to the recommended tightening torque.

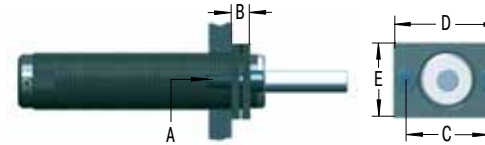
Disposal of packaging

Dispose packaging in an environmentally safe manner. The recycling of packaging saves raw materials and lowers the amount of waste. The used packaging materials do not contain illegal substances.

WARNING

- Rectangular flanges RF may only be used with the appropriate ACE shock absorbers or hydraulic feed controls according to chart.
- Rectangular flanges and the corresponding screws are dimensioned so that the maximum arising supporting forces can be accepted safely.
- The correct dimensioning of the shock absorbers or Precision hydraulic feed controls according to ACE catalogue, or mounting/operating manual, is absolutely necessary. Rectangular flanges RF may not be used, when overloading, i.e., a faulty calculation of listed product types has occurred.

Rectangular Flanges RF6 to RF25



Rectangular Flange RF

	Type	Max. Side Load Angle °	A	Max. torque Nm	B	C	D	E
RF6	MC9EUM	2	M3x8	3	5	14	20	10
RF8	MA30EUM	2	M4x10	4	6	18	25	14
RF8	MC10EUM	3	M4x10	4	6	18	25	14
RF8	MC30EUM	2	M4x10	4	6	18	25	14
RF10	MA50EUM	2	M4x10	4	6	20	28	14
RF10	MC25EUM	2	M4x10	4	6	20	28	14
RF10	SC25EUM	2	M4x10	4	6	20	28	14
RF12	MA35EUM	2	M5x12	6	6	24	32	20
RF12	MC75EUM	2	M5x12	6	6	24	32	20
RF12	SC75EUM	2	M5x12	6	6	24	32	20
RF14	MA150EUM	2	M5x12	6	6	26	34	20
RF14	MC150EUM	4	M5x12	6	6	26	34	20
RF14	SC190EUM0-4	5	M5x12	6	6	26	34	20
RF14	SC190EUM5-7	2	M5x12	6	6	26	34	20
RF20	MA225EUM	2	M6x14	11	8	36	46	32
RF20	MC225EUM	4	M6x14	11	8	36	46	32
RF20	MVC225EUM	2	M6x14	11	8	36	46	32
RF20	SC300EUM0-4	5	M6x14	11	8	36	46	32
RF20	SC300EUM5-9	5	M6x14	11	8	36	46	32
RF25	MA600EUM	2	M6x14	11	8	42	52	32
RF25	MA900EUM	1	M6x14	11	8	42	52	32
RF25	MC600EUM	2	M6x14	11	8	42	52	32
RF25	MVC600EUM	2	M6x14	11	8	42	52	32
RF25	MVC900EUM	2	M6x14	11	8	42	52	32
RF25	SC650EUM0-4	5	M6x14	11	8	42	52	32
RF25	SC650EUM5-9	5	M6x14	11	8	42	52	32
RF25	SC925EUM	5	M6x14	11	8	42	52	32

Mounting Block MB5SC2 to MB25SC2

Mounting instructions

Prior to mounting and application, check if the identification number on the mounting block or the packaging corresponds to the ID on the delivery note.

Mounting position: In any position, yet always so that the complete stroke can be used. Always mount the mounting block in order for the forces to be transferred centrally into the shock absorber via the piston rod. The maximum permissible side load angle of the individual shock absorber type (see chart) may not be exceeded. To minimize the unsupported length, it is recommended to mount the mounting block in the first third of the shock absorber body.

Mounting

Assemble the mounting block with the provided socket head bolt (DIN 912). The mounting surface must be level. The threads on the connection parts or on the connection to the machine must be able to accept the maximum arising generated forces safely. After aligning the mounting block and screwing in the shock absorbers, tighten the screws with the torque stated in the chart. Secure the shock absorber with the locknut against rotation. Refer to chart for required torque.

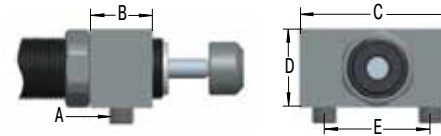
Disposal of packaging

Dispose packaging in an environmentally safe manner. The recycling of packaging saves raw materials and lowers the amount of waste. The used packaging materials do not contain illegal substances.

WARNING

- Mounting blocks MBSC2 may only be used with the appropriate ACE shock absorbers according to chart.
- The mounting blocks and the corresponding screws are dimensioned so that the maximum arising generated forces can be accepted safely.
- The correct dimensioning of the shock absorber according to ACE catalogue, or mounting/operating manual, is absolutely necessary. The mounting blocks MBSC2 may not be used, when overloading, i.e. a faulty calculation of a shock absorber has occurred.

Mounting Block MB5SC2 to MB25SC2



Mounting Block RF

	Type	Max. Side Load Angle °	A	Max. torque		B	C	D	E
				Screw Nm	Locknut Nm				
MB5SC2	MC5EUM	2	M3x10	3	1.2-1.5	8	20	10	12
MB6SC2	MC9EUM	2	M3x10	3	1.2-1.5	8	20	10	12
MB8SC2	MA30EUM	2	M4x12	5	4	10	25	12	16
MB8SC2	MC10EUM	3	M4x12	5	1.2-1.5	10	25	12	16
MB8SC2	MC30EUM	2	M4x12	5	4-4.3	10	25	12	16
MB10SC2	MA50EUM	2	M4x16	5	4-4.3	10	25	14	16
MB10SC2	MC25EUM	2	M4x16	5	4-4.3	10	25	14	16
MB14SC2	SC190EUM5-7	2	M5x20	9,5	13-14	12	20	32	20
MB20SC2	SC300EUM5-9	5	M6x25	37	27-30	20	28	40	25
MB25SC2	SC650EUM5-9	5	M6x30	37	60-66	25	34	46	32